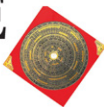


# FORTUNE CENTRAL



In need of good luck? Step into fengshui expert Adelina Pang's terrace house for a lesson on how to harness positive qi

Tay Suan Chiang

**F**ENGSHUI master Adelina Pang is quick to point out that her family did not buy their three-storey terrace house in Serangoon Gardens for fengshui reasons.

"It was for my elder daughter Annabelle, who was seven then, that we moved here – it's very close to CHIJ Our Lady of Good Counsel in Burghley Drive where she was a student," says Ms Pang, 40.

The family – husband Clive Ho, 45, a general manager, and younger daughter Clarice, 10, are the other members – moved in seven years ago.

But Ms Pang, who has been practising fengshui for more than 10 years, did make sure that the home was suitable for the family by looking at the floor plan and the *luo pan* (the Chinese compass).

Fengshui is the metaphysical science of assessing energy structure and positioning yourself to tap the beneficial *qi* (energy flow).

"The house faces the north-east which is ideal for my husband," she says. "He is the breadwinner so all directions should be ideal for him first."

She adds that the location of the four bedrooms plus a small study room was "perfect for us, so there was no need for massive renovations".

The couple bought the home for \$1 million and then did it up to a modern theme.

The first floor is where the living, dining rooms and kitchen are. On the second storey are the master bedroom and guest room while the top floor is where the two girls have their own bedrooms.

Still, some changes had to be made to improve the fengshui of the house.

Working with design firm Jil Cornerstone, they spent about \$200,000 on renovations, even going to the extent of building custom-made furniture. The tables, for instance, come with rounded curves because corners are not considered auspicious.

The alignment of the front door was also changed. It is not flushed against the wall but tilted by a few degrees, she says.

She adds that while it is not necessary for everyone to do the same, some people can avoid oncoming *sha qi* (bad energy) or reconnect the flow of the *qi* in the house by angling the door.

The back door, which used to be in line with the front and kitchen doors, was also repositioned. "If left at that spot, the *qi* would flow directly out of the house," she says.

"By changing its location (it is now more to the right), I can divert the flow of the *qi*."

Continued on pages 13 and 14

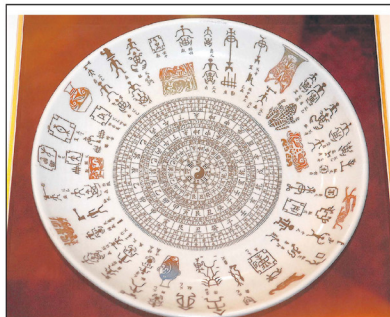


PHOTOS: DESMOND FOONG

**GOLD RUSH:** Ms Pang decorated her living room in a gold and white theme to ensure it had a strong 'metal' element. The painting on the wall is one of several in her home from art gallery Ode To Art.



A home is your refuge and your castle. In this fourth of a six-part series, we ask celebrities how they go about executing their vision of a dream home.



**STAYING GROUNDED (above):** A ceramic plate was placed in the dining room to enhance the 'earth' element there.

**CIRCLE OF LIFE (left):** As awkward corners are frowned upon in fengshui, Ms Pang chose a round dining table to symbolise unity.

# Classy not brassy

From previous page

Visitors to the kitchen may find the stove unusual. Unlike a conventional stove which has knobs on the right or at the bottom, the knobs on this stove are on the left.

Ms Pang says the stove was positioned such that the knobs on the left "face a good direction where the qi is coming from".

Her contractor, who knows what she does for a living, did not find her request unusual.

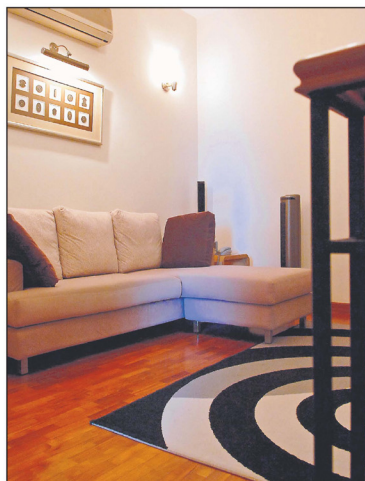
Her maid, who does most of the cooking, has also got used to the unusual placement of the knobs.

Outside the kitchen, the home does not have that ostentatious look you would associate with a geomancer's home.

Instead, the decor is classy, modern and done in neutral shades of cream, white and beige. She chose these shades because she says she would not tire of them.

The self-confessed art lover has several paintings from art gallery Ode To Art to jazz up her walls. The art gallery features abstract art works by local and regional artists.

> [taysc@sph.com.sg](mailto:taysc@sph.com.sg)



**MAGIC CARPET:** As there were conflicting energies in the second floor family area, Ms Pang bought a rug with concentric circles to represent 'metal', an element that helps to diffuse bad qi.

More pictures on next page

From previous page



**LIGHT MY FIRE:** The kitchen stove was repositioned, with the knobs on the left instead of on the right. The idea, says Ms Pang, was to have them face the direction of positive energy.



**GREENHOUSE (left):** Tiny jade tea pots which channel the 'earth' element are displayed in the house.



**BOTTLED UP:** For more of the 'earth' element, crystal or earthenware can also be used as an alternative to jade.

## Decor tips

**1** Ms Pang says fengshui is a science and not about superstition. "Instead of buying items that supposedly bring luck and placing them around the home, home owners should also display items that are visually pleasing and give you a positive feel," she says.

For example, the large metallic-coloured abstract painting in her living room is an instant talking point because of its size and the colours instantly draw the eyes to it.

It fits in with her home's modern contemporary theme as well.

**2** You need not have a luopan to find the good fengshui points in your home. "A conventional compass will do too," she says.

Have a floor plan of your home ready to mark out the locations. The south-west and south-east directions are good. She suggests placing water features in these two locations in the home.

**3** If you have plants in the house, try not to get those with spiky leaves.

Pick plants that are leafy and have round-shaped leaves. Outdoors, plants with spiky leaves can be placed at bad locations to suppress sha qi. The bamboo, which signifies long life, is a good plant to have, she says. So are the jade plant and the desert rose (fu gui hua).